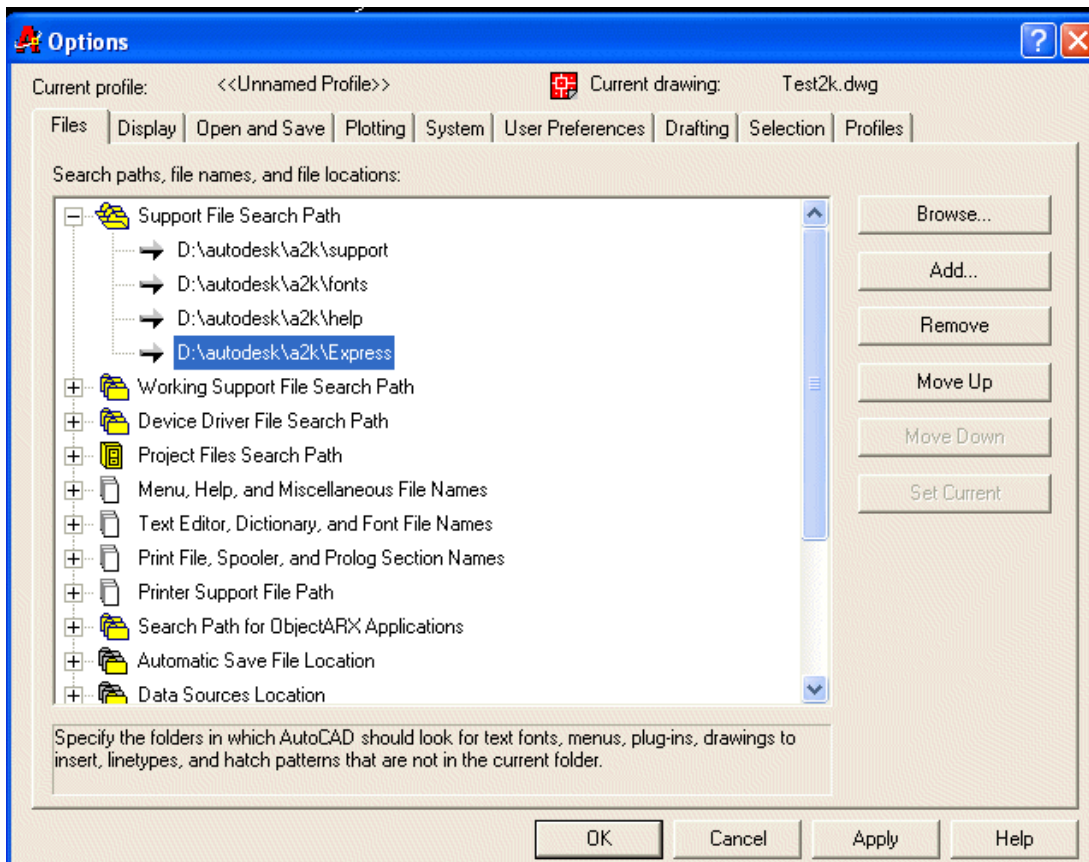
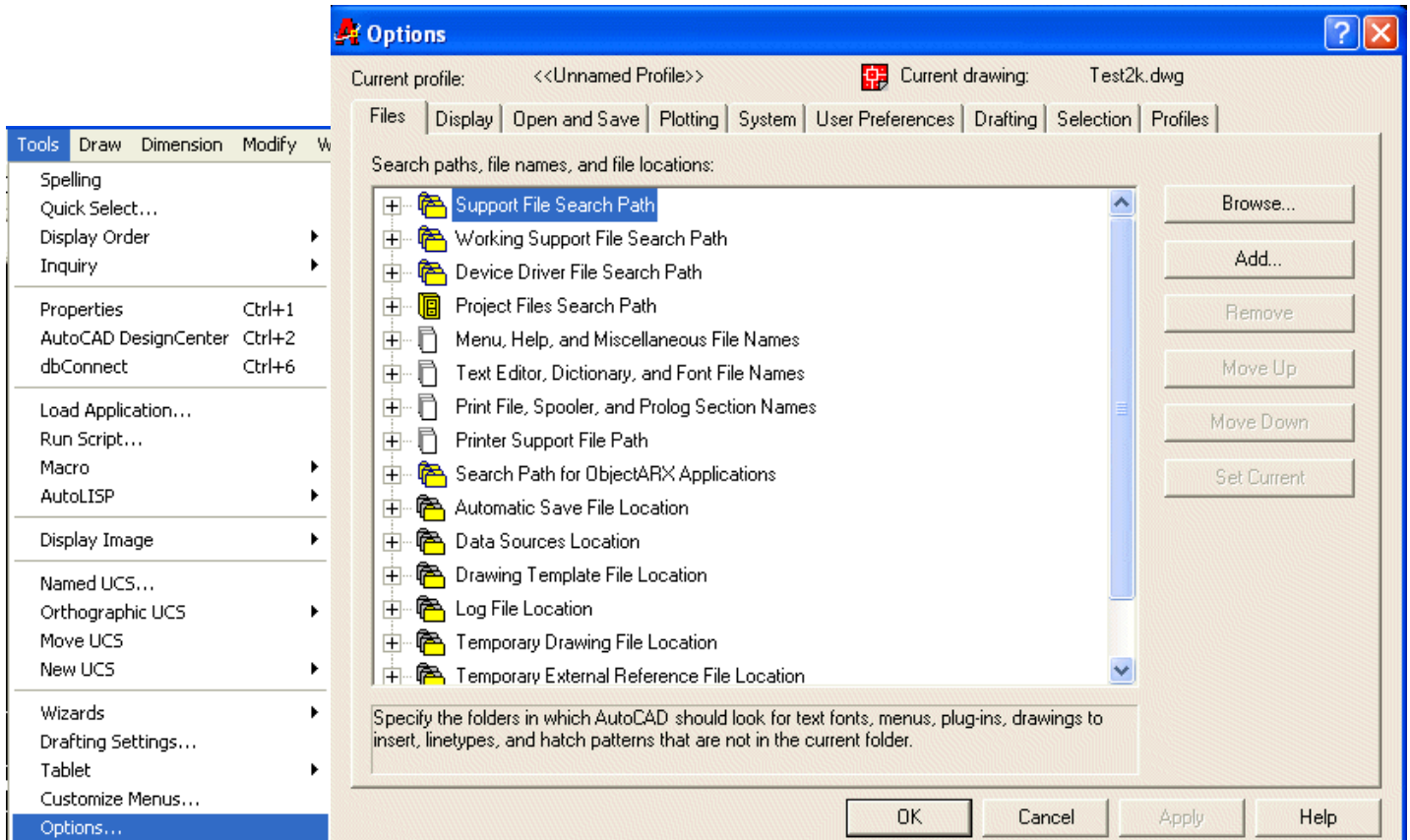
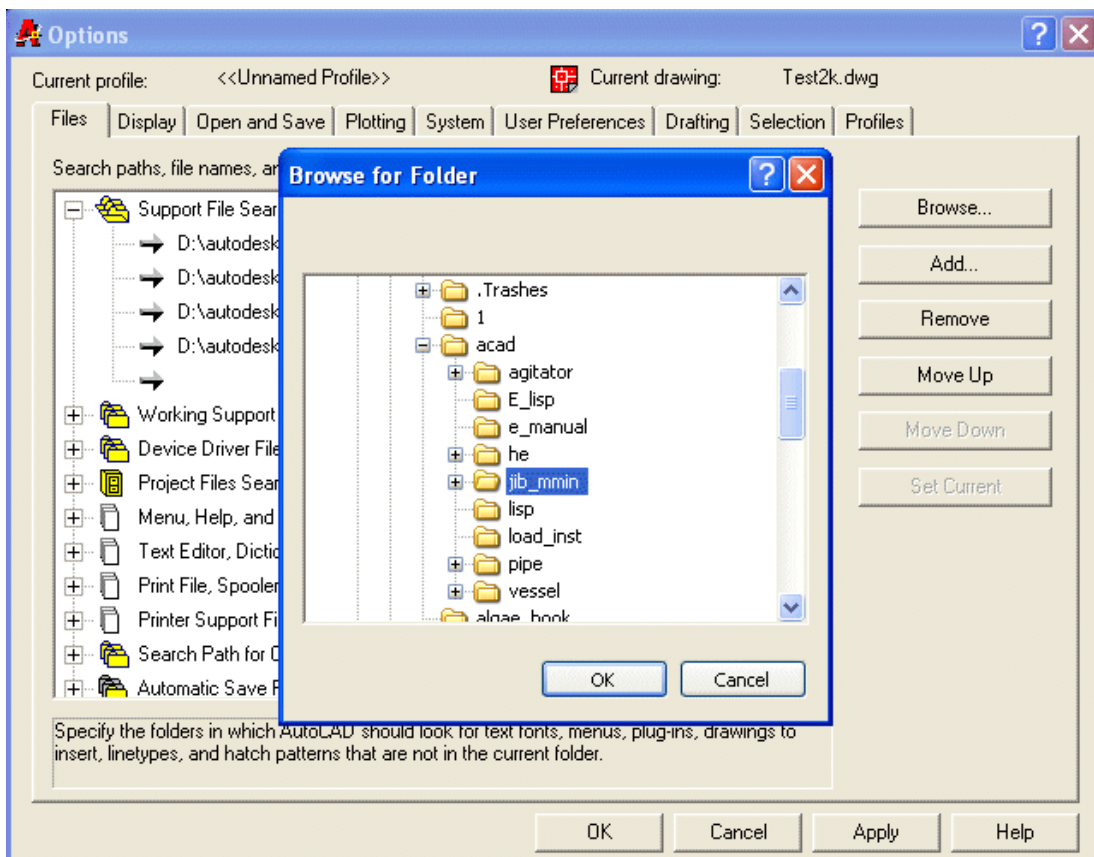


Loading Instructions for Program for Jib Crane

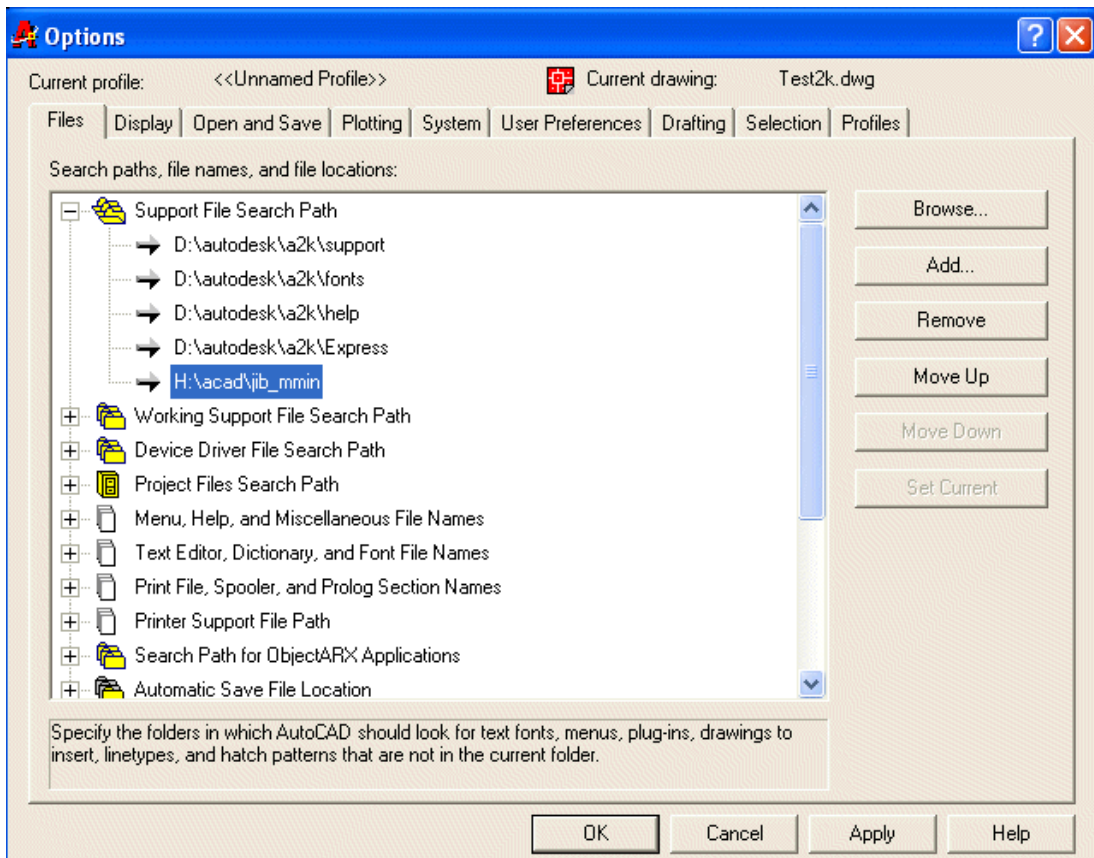
To run the package unzip jib.zip and copy files in a folder on hard disk (not on desk top). While running AutoCAD program, click on tools -> Options (or Preferences) -> Files -> + of Support File Search Path -> Add -> Browse -> Select the folder. This is as shown below.



Click on Add and then on Browse



Select the folder in which all program files are saved.



The folder in which all program files are saved, will be added to search path. Click on Apply and then on OK.

```
Command:
Command: (load "jib.lsp")
Loading Main Jibcrane Program. Please wait
Type jib and press <enter> to start
Command:
```

Open trial.dwg drawing provided with package or use the open drawing1.dwg to start. (A1, A2, A3, A4 and A1i, A2i, A3i, A4i and others are template drawings. Do not make any changes in those drawings). At command prompt Type (load "jib.lsp") and press enter. A message will appear: Type jib and press enter to start. At command prompt, type jib and press enter. The trial program will start.