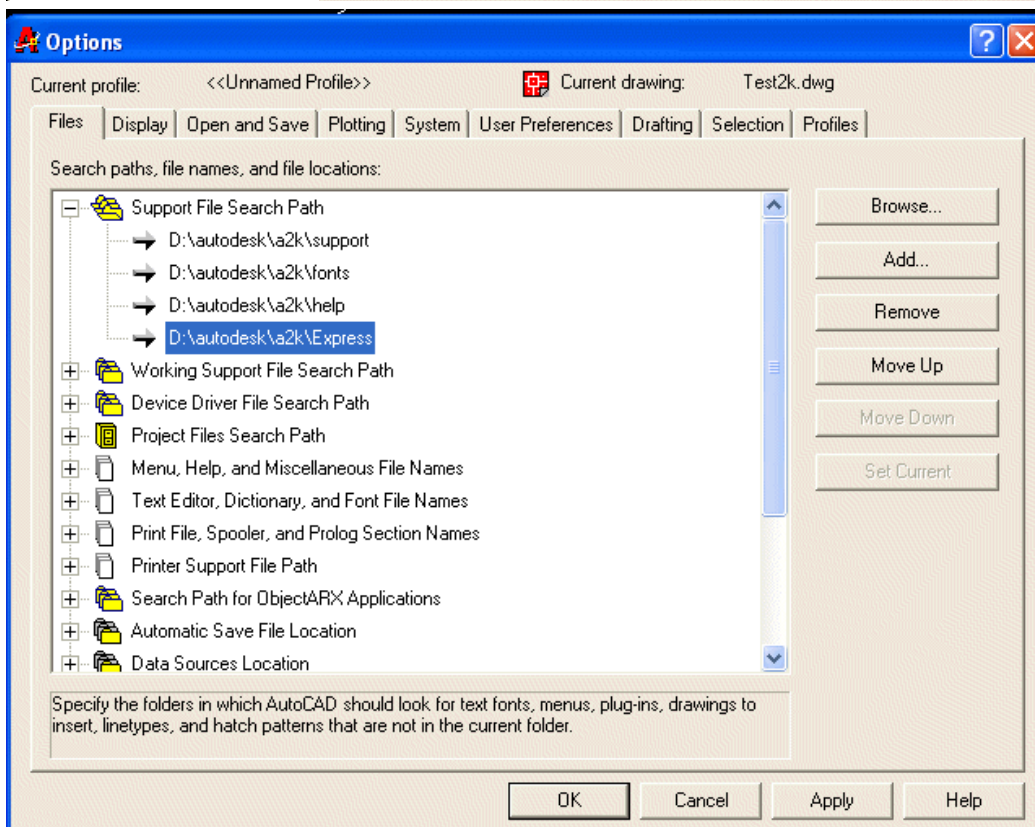
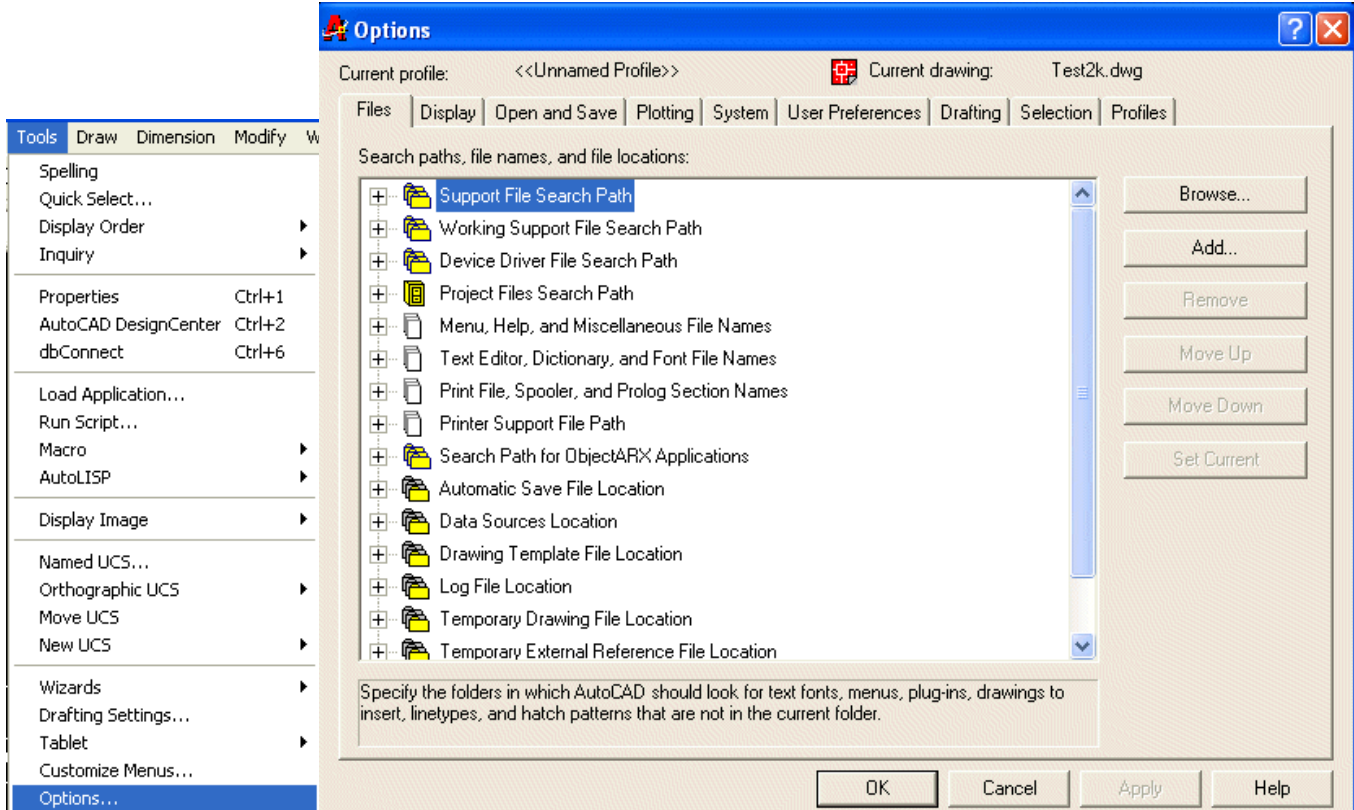
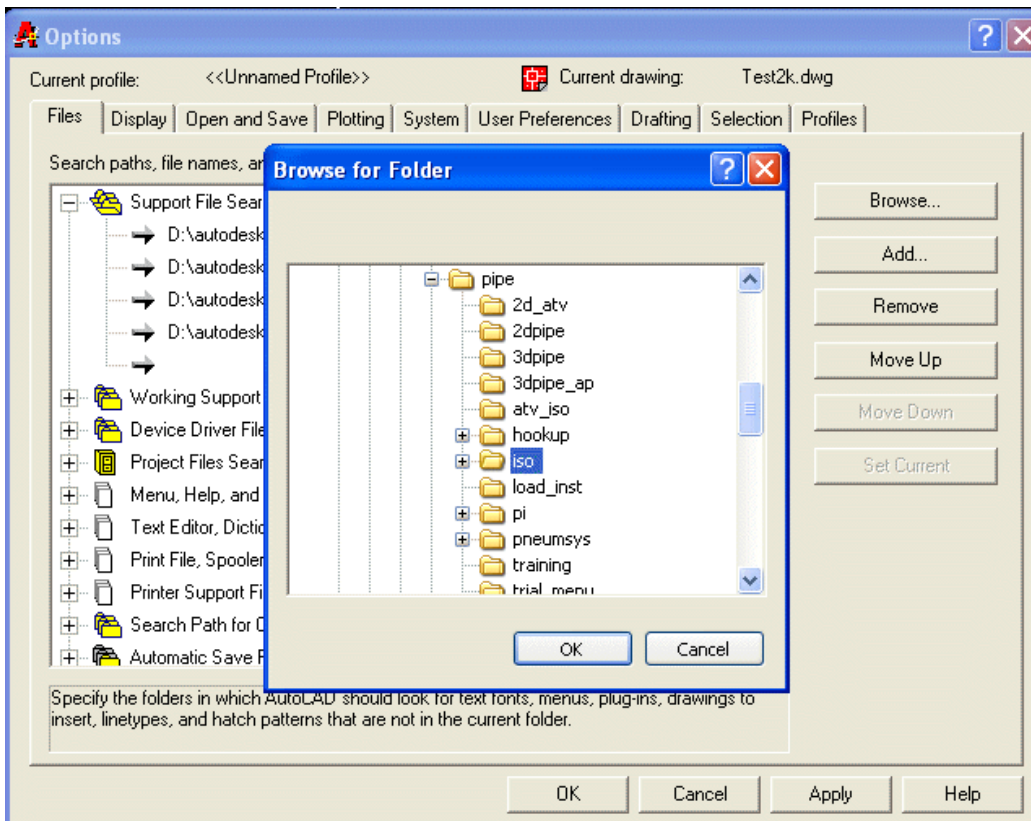


## Loading Instructions for Iso Files

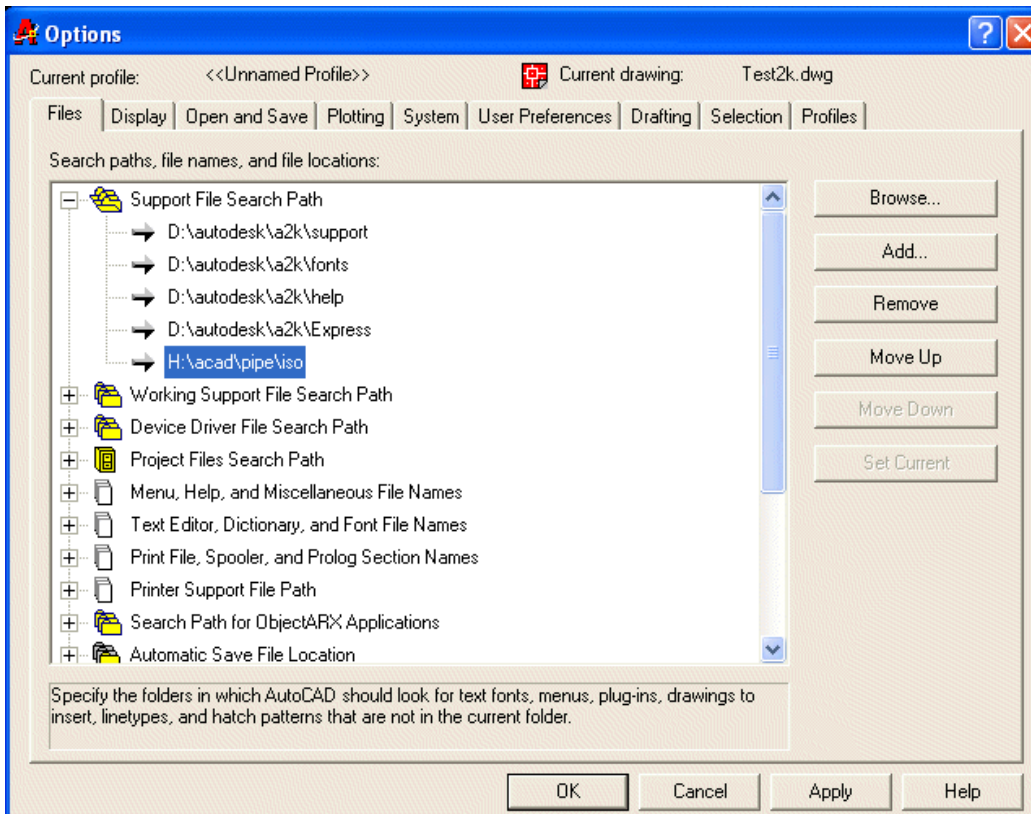
To run the package unzip iso.zip and copy files in a folder on hard disk (not on desk top). While running AutoCAD program, click on tools -> Options (or Preferences) -> Files -> + of Support File Search Path -> Add -> Browse -> Select the folder. This is as shown below.



Click on Add and then on Browse

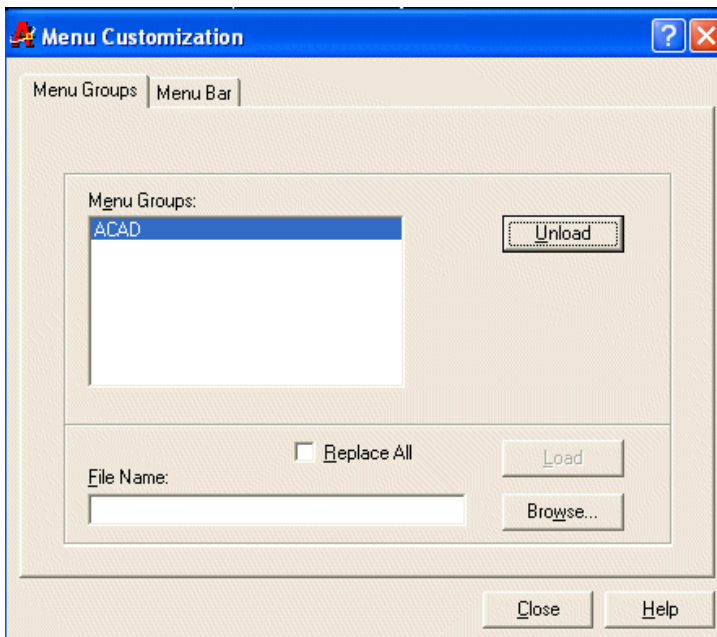


Select the folder in which all program files are saved.

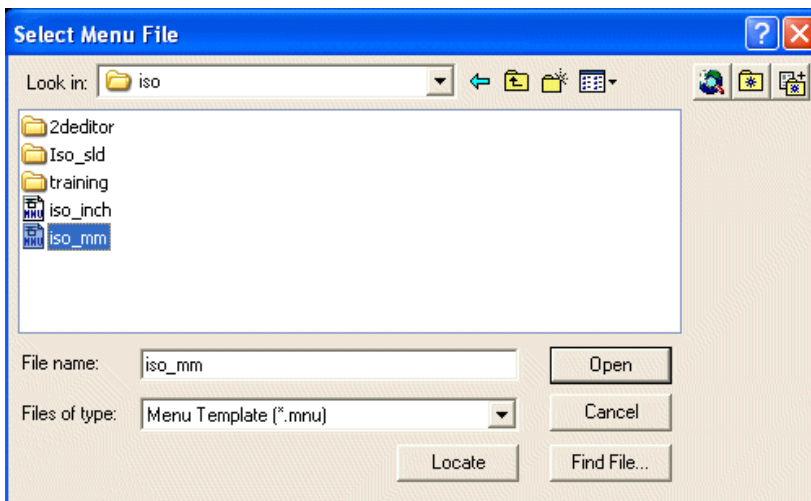


The folder in which all program files are saved, will be added to search path. Click on Apply and then on OK.

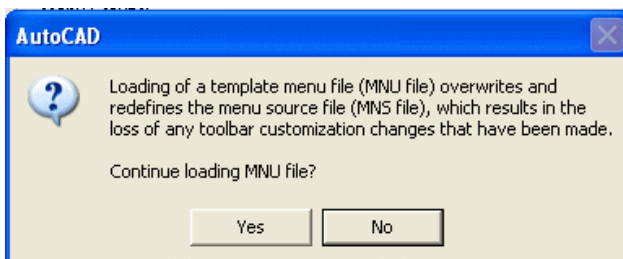
**In BrickCAD Lite, installation is bit different. You can add menu with CUSTOMIZE command and You can load lisp file by APpload command.**



In other CAD programs, At command prompt run menuload command (Type menuload and press enter). A dialog box will open showing acad as current menu in menugroup tab. Click on browse near file name text box.

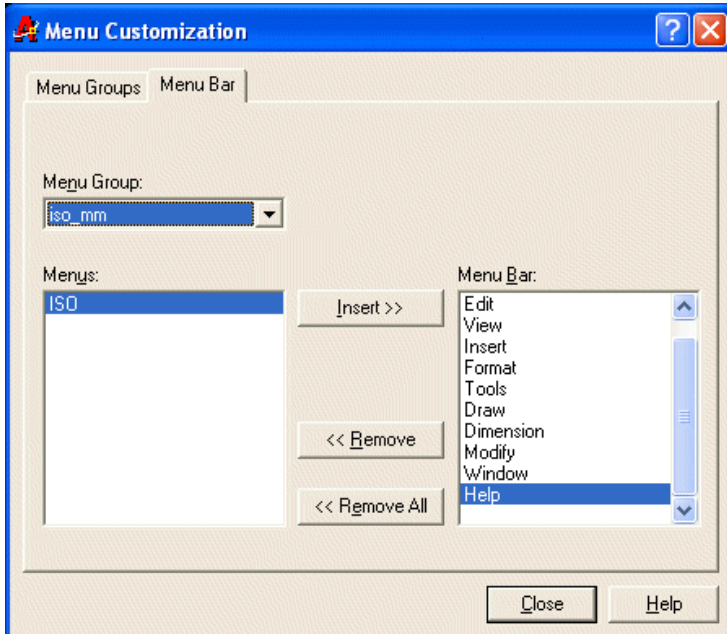
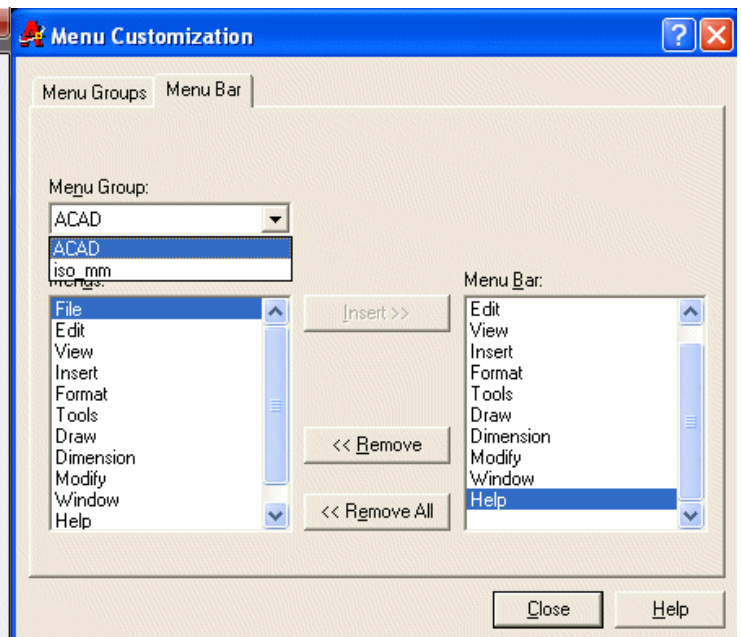
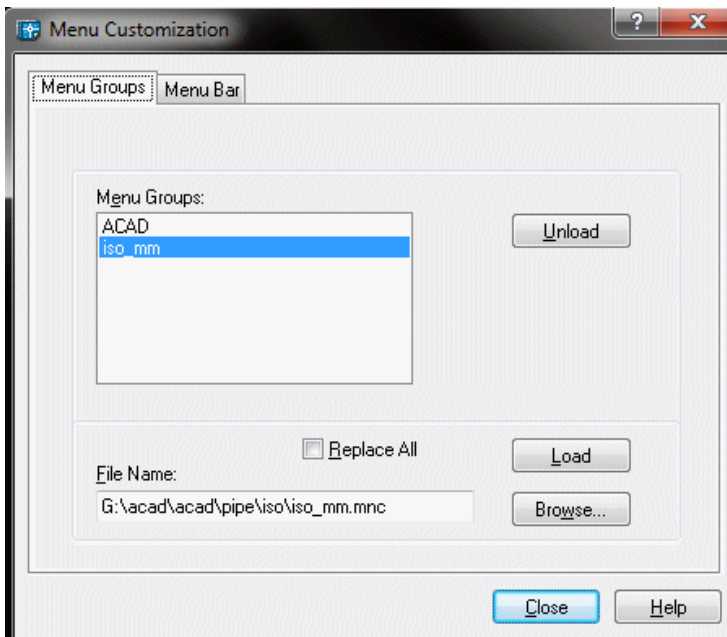


Change folder to the folder where all program files are located and click on arrow of Files of Type box. Select Menu Template (\*.mnu) and select iso\_mm or iso\_inch as menu to be loaded. Click on open button.



Click on load button. Click yes to continue. For latest version, Click on close. iso menu will be loaded, and start using pull down menu. The pull-down menu, iso has all the iso drawing options. The other menu items are not modified.

If you are using earlier versions, click on menutab menubar. Click on arrow in menu group list box.



Click on insert and then click on close button. iso menu will be loaded, and start using pull down menu. The pull-down menu, eqofluid has all the iso drawing options. The other menu items are not modified.