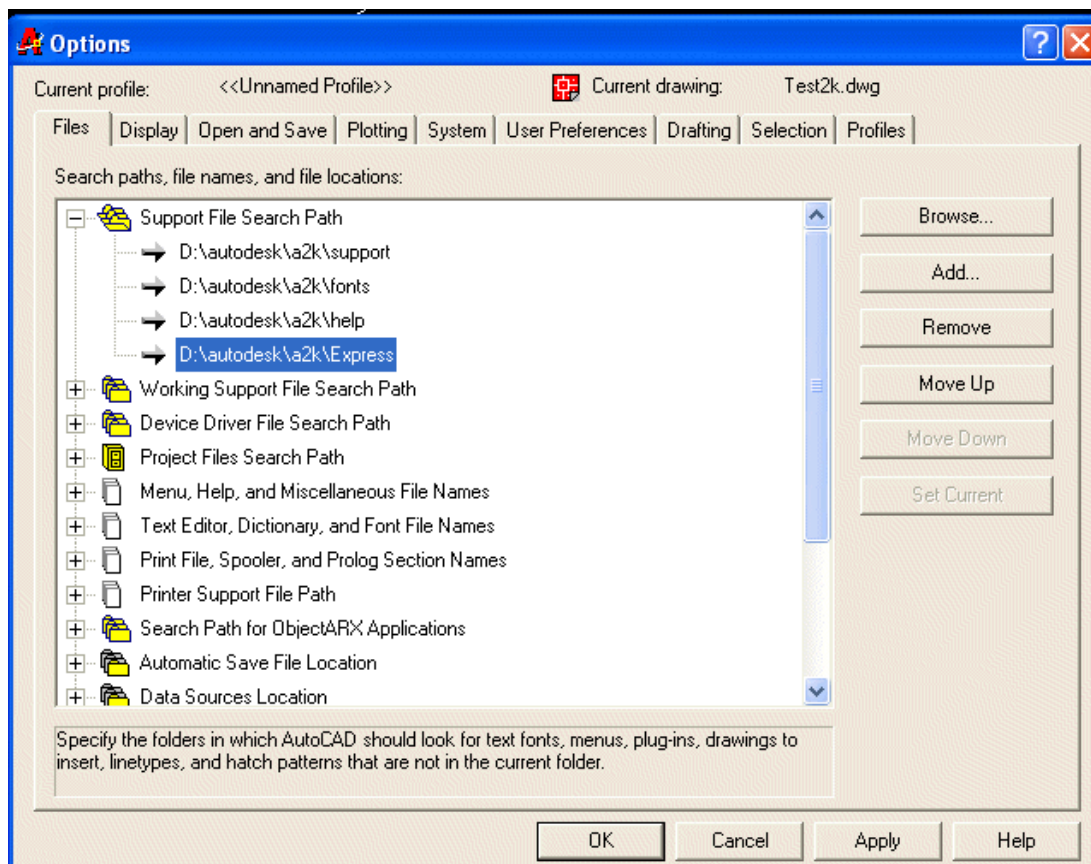
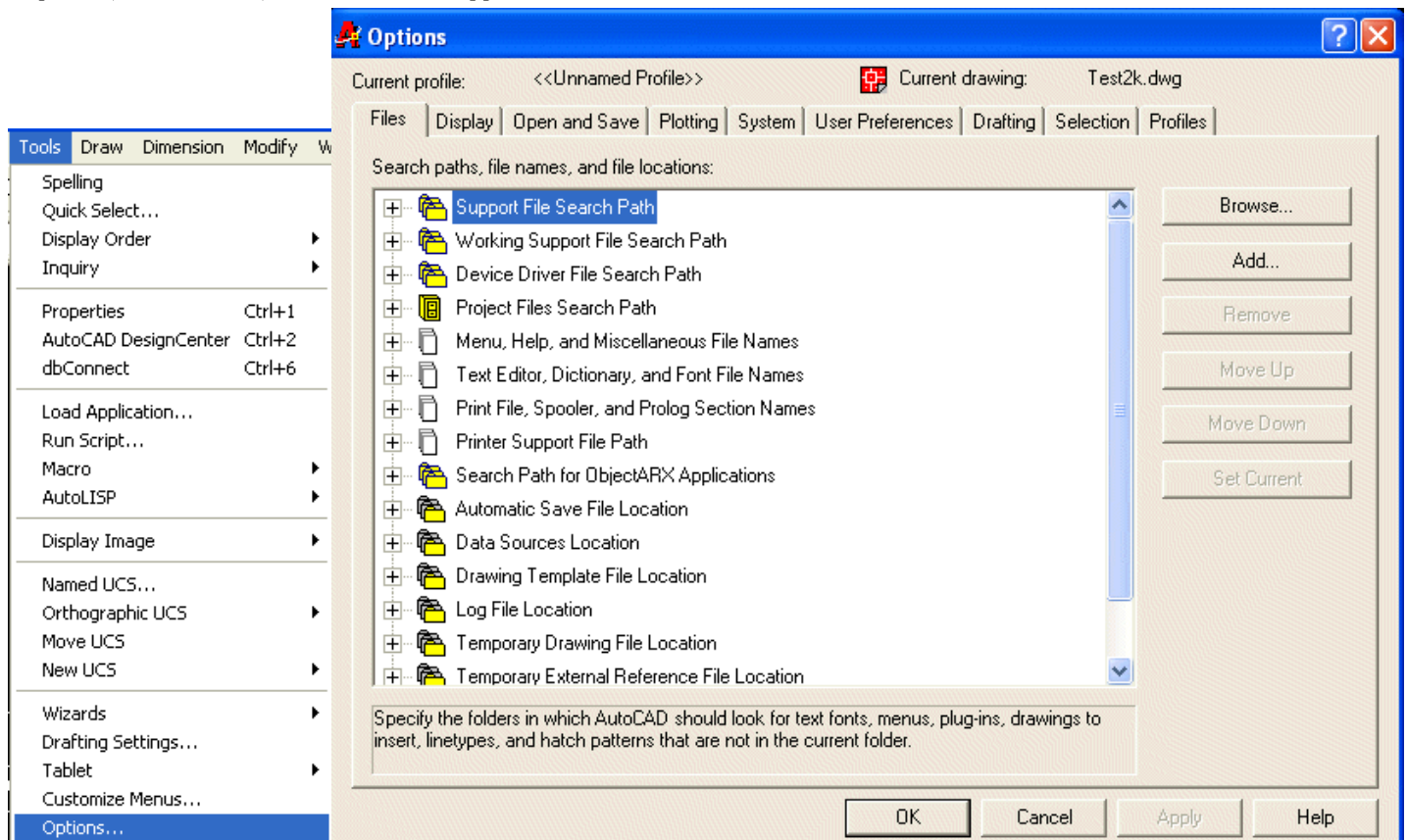
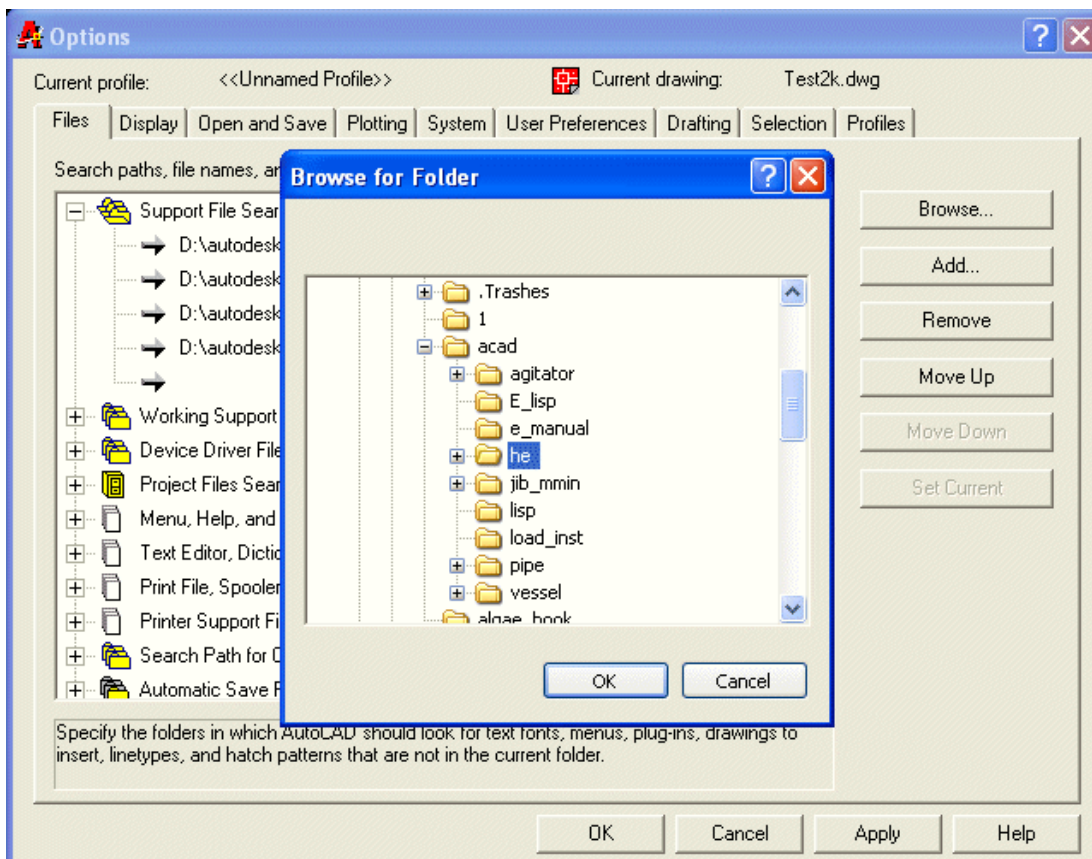


## Loading Instructions for Program for Tubular Heat Exchanger

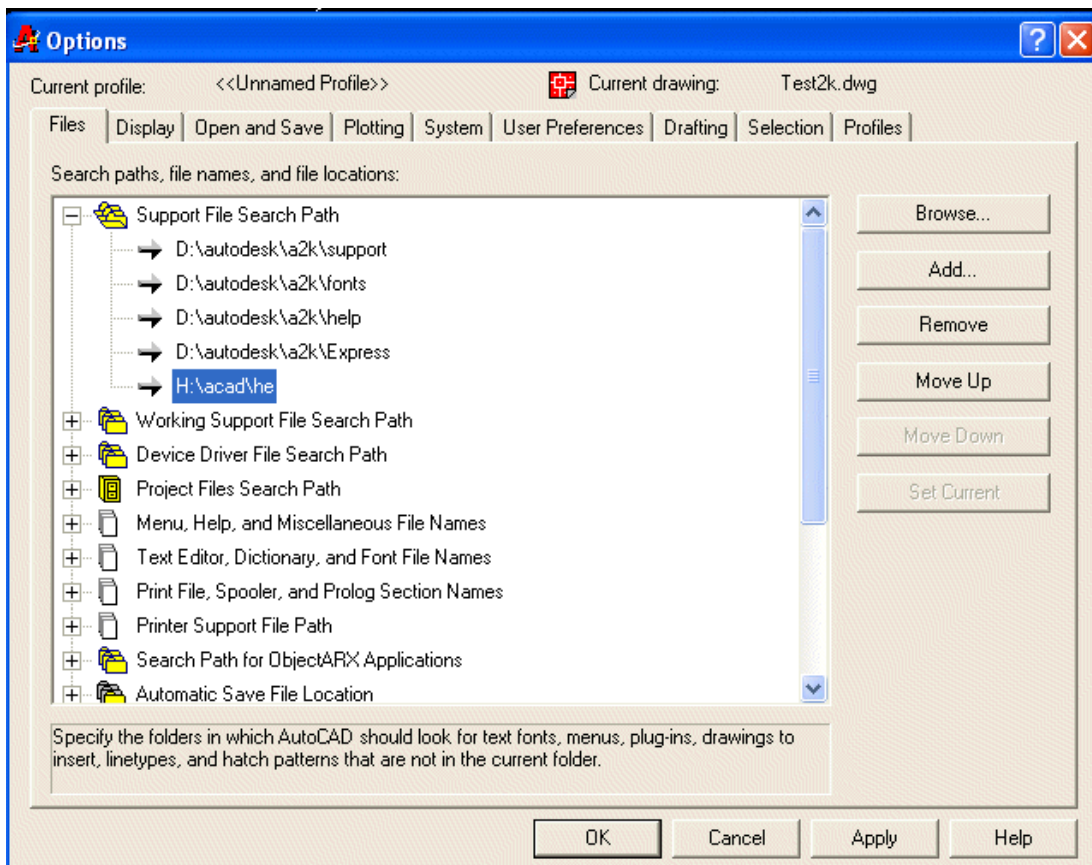
To run the package unzip he.zip and copy files in a folder on hard disk (not on desk top). While running AutoCAD program, click on tools -> Options (or Preferences) -> Files -> + of Support File Search Path -> Add -> Browse -> Select the folder. This is as shown below.



Click on Add and then on Browse



Select the folder in which all program files are saved.



The folder in which all program files are saved, will be added to search path. Click on Apply and then on OK.

```
Command:
Command: (load "he.lsp")
Loading Heat Exchanger Program. Please wait ...Loaded.
Type he and press <enter> to start
Command:
```

Open trial.dwg drawing provided with package or use the open drawing1.dwg to start. (A1.dwg is template drawings. Do not make any changes in those drawings). At command prompt Type (load "jib.lsp") and press enter. A message will appear: Type jib and press enter to start. At command prompt, type jib and press enter. The trial program will start.