



**Satish Lele**

[leleequip@gmail.com](mailto:leleequip@gmail.com)

M:91-98202 77283

---

## **LISP Program for Jib Crane**

This is a LISP based program for Drawing of Jib Crane, with user friendly dialog boxes, which is an add-on for any CAD program for developing GA drawing as well as component wise drawings with Bill of Material and weights of all components for Top and Bottom Jib Crane. The program asks for all parameters and then automatically draws separate drawings for each component giving Bill of materials for that component as well as weight of each sub-component and also total weight. LISP Program for Jib Crane then draws GA Drawing with total weight of Jib Crane. The Package gives all minor details at Quotation Stage itself and this helps to quote in most competitive manner. LISP Program for Jib Crane can draw a Jib Crane up to a span of 6 meters, lift of 4 meters, and lifting load of 3 tons.

Jib Crane package Bought so far by 14 parties

Three Structural members, such as Beams, Channels and Angles as well as Plates and Pipe are used to fabricate a jib crane. You can select American, British or Indian standard for sizes of these Structural members. The sizes of Structural members as per the standard are then shown in dialog boxes. You can even change these values. If you are choosing standard of your country, you can fill in sizes of structural members as per standards of your country.

If you select American Standard all values in dialog boxes will be shown in foot-inches and all drawings will be created in foot-inch dimensions. If you select British or Indian Standard all values in dialog boxes will be shown in metric system and all drawings will be created in millimeter dimensions.

---

I have prepared a Trial Program which shows 4 cases for the Top and Bottom beams. Ask us for free Demo. To run the demo copy jib\_demo.zip file in acad support directory (or any other directory defined in CAD path settings) and unzip it. If you copy them to some other folder, in CAD, click on tools ->Options (or Preferences) -> Files -> + of Support File Search Path -> Add -> Browse -> Select the folder. All files from zip file should be in this folder. LISP Program for Jib Crane contains jib.lsp, jib.del program files and A1, A2, A3, A4 prototype drawings. Load jib.lsp by typing at command prompt (load "jib.lsp") and press <enter>. At command prompt type jib and press <enter> and program will start. This is a full program which runs for 4 options.

Programs asks for parameters in the following dialog boxes, and based on these values, LISP Program for Jib Crane draws the drawings.

**Jib Crane Drawing**

Jib Crane Drawing Program by  
SATISH LELE  
satish.lele@gmail.com  
http://www.svlpipe.com/jib.htm

Standard for Structural

☒ United States  
☐ Indian  
☐ British

OK

**Design of JIB CRANE**

Jib Crane Drawing Program by  
SATISH LELE  
satish.lele@gmail.com  
http://www.svlpipe.com/jib.htm

Please enter Standards for Structural, Plates, Pipes :

Structural Standard : ANSI 360-10  
Pipe Standard : ANSI B36.10  
Plate Standard : A36

OK

You can not change values in  
edit boxes in Trial Version

**Jib Crane Drawing**

Jib Crane Drawing Program by  
SATISH LELE  
satish.lele@gmail.com  
http://www.svlpipe.com/jib.htm

Demo Number

☒ Demo 1  
☐ Demo 2  
☐ Demo 3  
☐ Demo 4

OK

**Jib Crane Drawing**

Jib Crane Drawing Program by  
SATISH LELE  
satish.lele@gmail.com  
http://www.svlpipe.com/jib.htm

Standard for Structural

☒ United States  
☐ Indian  
☐ British

OK

**Jib Crane Drawing**

Jib Crane Drawing Program by  
SATISH LELE  
satish.lele@gmail.com  
http://www.svlpipe.com/jib.htm

Type of Jib

☒ Top Jib  
☐ Bottom Jib

OK

**Design of JIB CRANE**

Jib Crane Drawing Program by  
SATISH LELE  
satish.lele@gmail.com  
http://www.svlpipe.com/jib.htm

Please enter Drawing data:

Clients Name : Name of Company  
Designed by: ABC  
Drawn by: DEF  
Checked by: GHI  
Appd by: JKL  
Date: 10-08-12  
Drawing No.: JC0001

OK

You can not change values in  
edit boxes in Trial Version

**Choose Pillar Type**

Jib Crane Drawing Program by  
SATISH LELE  
satish.lele@gmail.com  
http://www.svlpipe.com/jib.htm

☐ Pipe  
☒ Fabricated

OK

**Crane data Bottom Jib :**

Jib Crane Drawing Program by  
SATISH LELE  
satish.lele@gmail.com  
<http://www.svlpipe.com/jib.htm>

Crane radius :	9'
Lift Height :	8'-4"
Hoist Capacity :	500 Lb
Bearing CL Distance :	2'-8"
Pivot CL Distance :	4"
Thk Pivot Stiffner :	5/16"
Type of Jib :	BOT

OK

You can not change values in  
edit boxes in Trial Version

**Bearing data:**

Jib Crane Drawing Program by  
SATISH LELE  
satish.lele@gmail.com  
<http://www.svlpipe.com/jib.htm>

Top Bearing		Bot Bearing	
Bearing Number :	6307ZZ	Bearing Number :	30205
Bearing Make :	SKF	Bearing Make :	SKF
Bearing ID :	1 3/8"	Bearing ID :	1"
Bearing OD :	3 1/8"	Bearing OD :	2"
Bearing Thk :	1 1/16"	Bearing Thk :	7/8"
Bearing Wt :	1.01	Bearing Wt :	0.33
		Outer Race Width :	1/2"

OK

You can not change values in  
edit boxes in Trial Version

### Jib Crane Drawing



Jib Crane Drawing Program by  
SATISH LELE  
satish.lele@gmail.com  
<http://www.svlpipe.com/jib.htm>

#### Suggested Pillar Base Plate

- ☐ Base Plate Size 20 inch x 20 inch  
☒ Base Plate Size 24 inch x 24 inch  
☐ Base Plate Size 30 inch x 30 inch  
☐ Base Plate Size 36 inch x 36 inch  
☐ Base Plate Size 46 inch x 46 inch  
☐ Base Plate Size 56 inch x 56 inch

OK

### Please enter Baseplate data:



Jib Crane Drawing Program by  
SATISH LELE  
satish.lele@gmail.com  
<http://www.svlpipe.com/jib.htm>

Length of Base Plate :

2'

Distance Between End Bolts :

1'-8 3/8"

Thikness of Top Plate :

3/8"

Thickness of Base Plate :

1/2"

Bolt Hole Diameter :

1 1/8"

Number of Bolts :

8

Size of Pillar at Base :

1'-4"

Size of Pillar at Top :

10"

Pillar Plate Thk :

3/16"

OK

You can not change values in  
edit boxes in Trial Version

**Jib Crane Drawing**

Jib Crane Drawing Program by  
SATISH LELE  
satish.lele@gmail.com  
<http://www.svlpipe.com/jib.htm>

Suggested Pivot Bracket Plate

☐ Bracket Plate Size 14.5 inch x 14.5 inch  
☒ Bracket Plate Size 16.5 inch x 16.5 inch  
☐ Bracket Plate Size 18.5 inch x 18.5 inch  
☐ Bracket Plate Size 22 inch x 22 inch  
☐ Bracket Plate Size 26 inch x 26 inch  
☐ Bracket Plate Size 32 inch x 32 inch

OK

**Please enter Bracket plate data:**

Jib Crane Drawing Program by  
SATISH LELE  
satish.lele@gmail.com  
<http://www.svlpipe.com/jib.htm>

Thickness of Bracket Plate :   
 Thickness of Ribs :   
 Bracket Plate Thickness :   
 Number of Holes :   
 Diameter of Holes :   
 Length of Plate :   
 Width of Plate :   
 Horizontal Distance between Bolts :   
 Spacing between Holes :   
 Bolt Size :   
 Number of Horizontal Ribs :   
 Distance of Top Bearing from Top :   
 Distance of Bottom Bearing from Bottom :

OK

You can not change values in edit boxes in Trial Version


**Hoist data:**

Jib Crane Drawing Program by  
SATISH LELE  
satish.lele@gmail.com  
<http://www.svlpipe.com/jib.htm>

Lifting Equipment Type :   
 Lifting Equipment Model :   
 Weight of Hoist :   
 Head Room :   
 End Approach :

OK


You can not change values in edit boxes in Trial Version

**Jib Crane Drawing** 


Jib Crane Drawing Program by  
SATISH LELE  
satish.lele@gmail.com  
<http://www.svlpipe.com/jib.htm>

Select Channel

☒ 3"  
☐ 4"  
☐ 5"  
☐ 6"  
☐ 7"  
☐ 8"  
☐ 9"  
☐ 10"  
☐ 12"  
☐ 13"  
☐ 15"  
☐ 18"




You can not change values in  
edit boxes in Trial Version

**Jib Crane Drawing** 


Jib Crane Drawing Program by  
SATISH LELE  
satish.lele@gmail.com  
<http://www.svlpipe.com/jib.htm>

Select Channel

☒ 3" Heavy  
☐ 3" Medium  
☐ 3" Light




You can not change values in  
edit boxes in Trial Version

**Jib Crane Drawing** 


Jib Crane Drawing Program by  
SATISH LELE  
satish.lele@gmail.com  
<http://www.svlpipe.com/jib.htm>

Channel Size for Pivot

Size of Channel :	<input type="text" value="3"/>
Width of Channel Flange :	<input type="text" value="1 5/8"/>
Thickness of Channel Flange :	<input type="text" value="1/4"/>
Thickness of Channel Web :	<input type="text" value="3/8"/>
Running weight :	<input type="text" value="6.00"/>
Type of Channel :	<input type="text" value="USC"/>




You can not change values in  
edit boxes in Trial Version

**Jib Crane Drawing** 


Jib Crane Drawing Program by  
SATISH LELE  
satish.lele@gmail.com  
<http://www.svlpipe.com/jib.htm>

Select Beam

- ☐ 3"
- ☒ 4"
- ☐ 5"
- ☐ 6"
- ☐ 7"
- ☐ 8"
- ☐ 10"
- ☐ 12"
- ☐ 15"
- ☐ 18"
- ☐ 20"




You can not change values in  
edit boxes in Trial Version

**Jib Crane Drawing** 


Jib Crane Drawing Program by  
SATISH LELE  
satish.lele@gmail.com  
<http://www.svlpipe.com/jib.htm>

Select Beam

- ☒ 4" Heavy
- ☐ 4" Light




You can not change values in  
edit boxes in Trial Version

**Jib Crane Drawing** 

Jib Crane Drawing Program by  
SATISH LELE  
satish.lele@gmail.com  
<http://www.svlpipe.com/jib.htm>

Select Beam

- ☒ Standrad Beam
- ☐ Wide Flange Light Beam
- ☐ Stancions
- ☐ Joists



Jib Crane Drawing

Jib Crane Drawing Program by  
SATISH LELE  
satish.lele@gmail.com  
<http://www.svlpipe.com/jib.htm>

Beam Size

Size of Beam :4"

Width of Beam Flange :2 13/16"

Thickness of Beam Flange :5/16"

Thickness of Beam Web :5/16"

Running weight of Beam :9 1/2"

Type of Beam :USB

OK

You can not change values in  
edit boxes in Trial Version

Please enter Angle data:

Jib Crane Drawing Program by  
SATISH LELE  
satish.lele@gmail.com  
<http://www.svlpipe.com/jib.htm>

Size of Topchord Angle :1 1/2"

Thickness of Topchord Angle :3/16"

Running weight :2.12

Type of Angle :USA

OK

You can not change values in  
edit boxes in Trial Version

Please enter Angle data:

Jib Crane Drawing Program by  
SATISH LELE  
satish.lele@gmail.com  
<http://www.svlpipe.com/jib.htm>

Size of Vertical Angle :1 1/2"

Thickness of Vertical Angle :3/16"

Running weight :2.12

Type of Angle :USA

OK

You can not change values in  
edit boxes in Trial Version



**Hoisto data:**

Jib Crane Drawing Program by  
 SATISH LELE  
 satish.lele@gmail.com  
<http://www.svlpipe.com/jib.htm>

Hoist Speed : 5

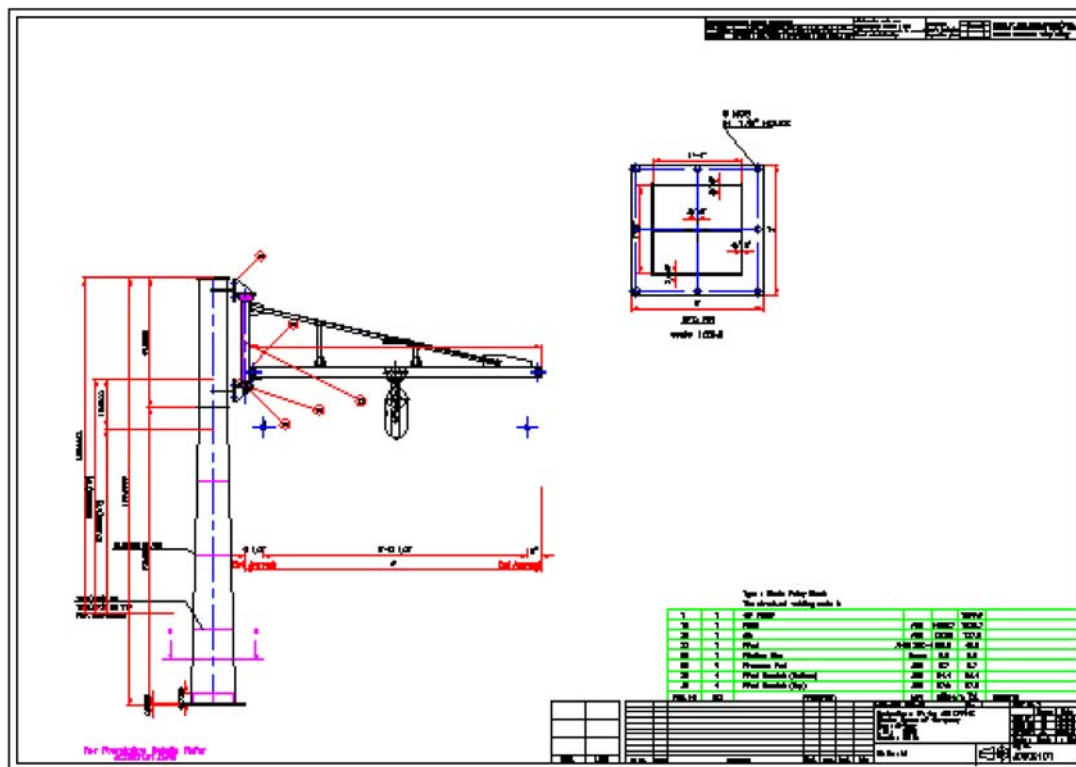
Travel Speed : 5

☒ Brake Provided

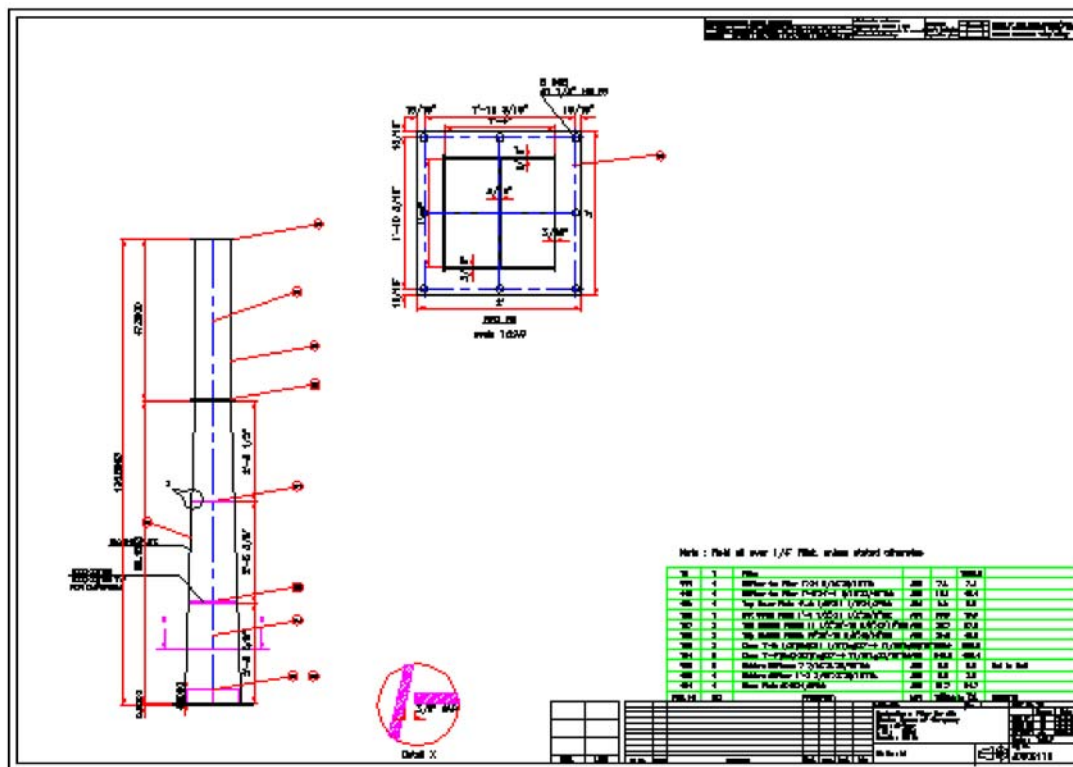
OK

You can not change values in Trial Version

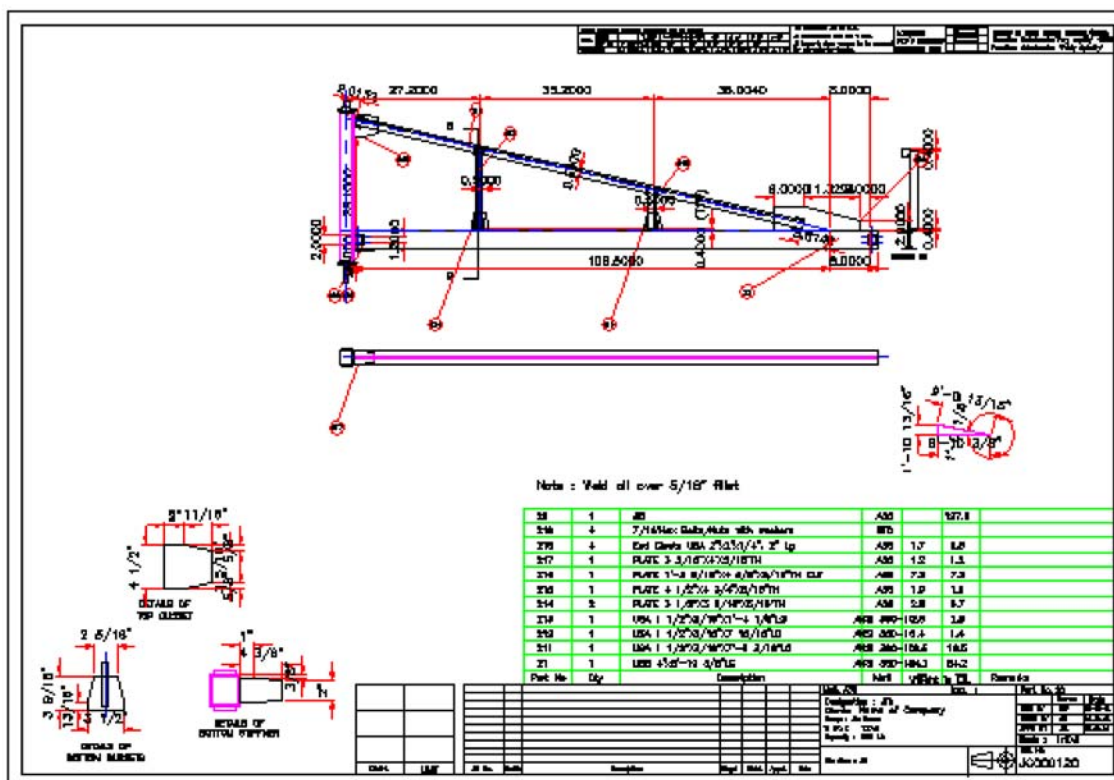
Drawings developed by my program are as follows :

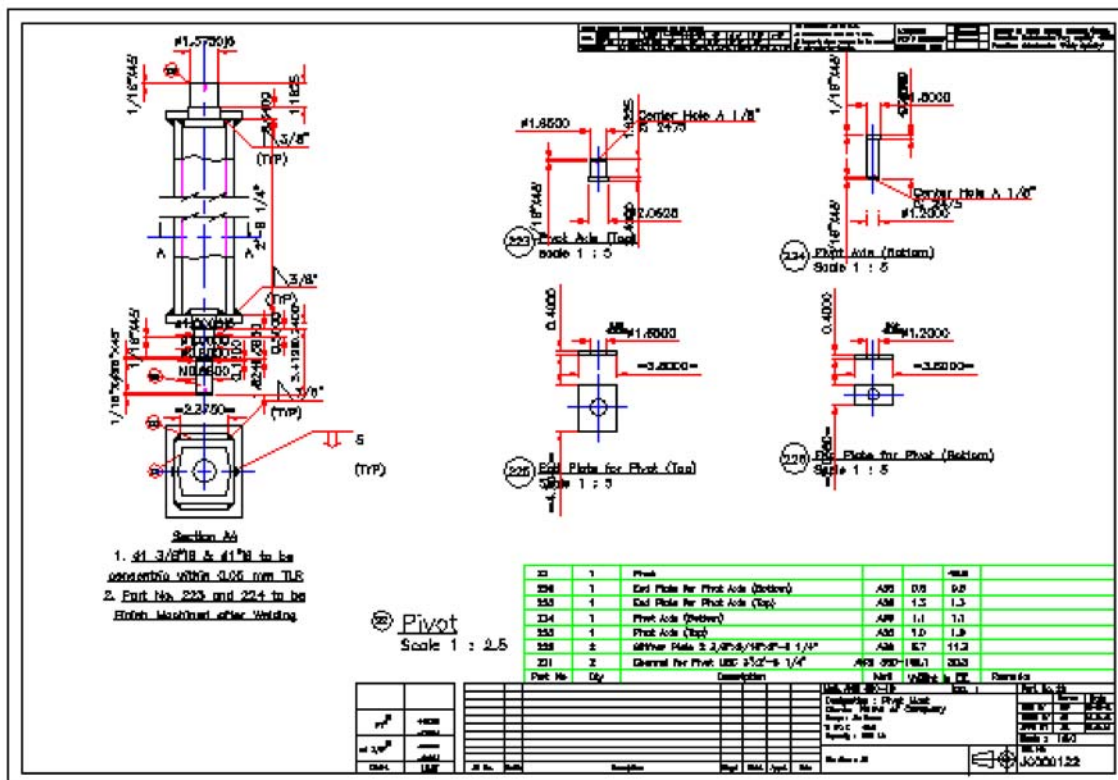


### A Complete GA Drawing of Jib crane.

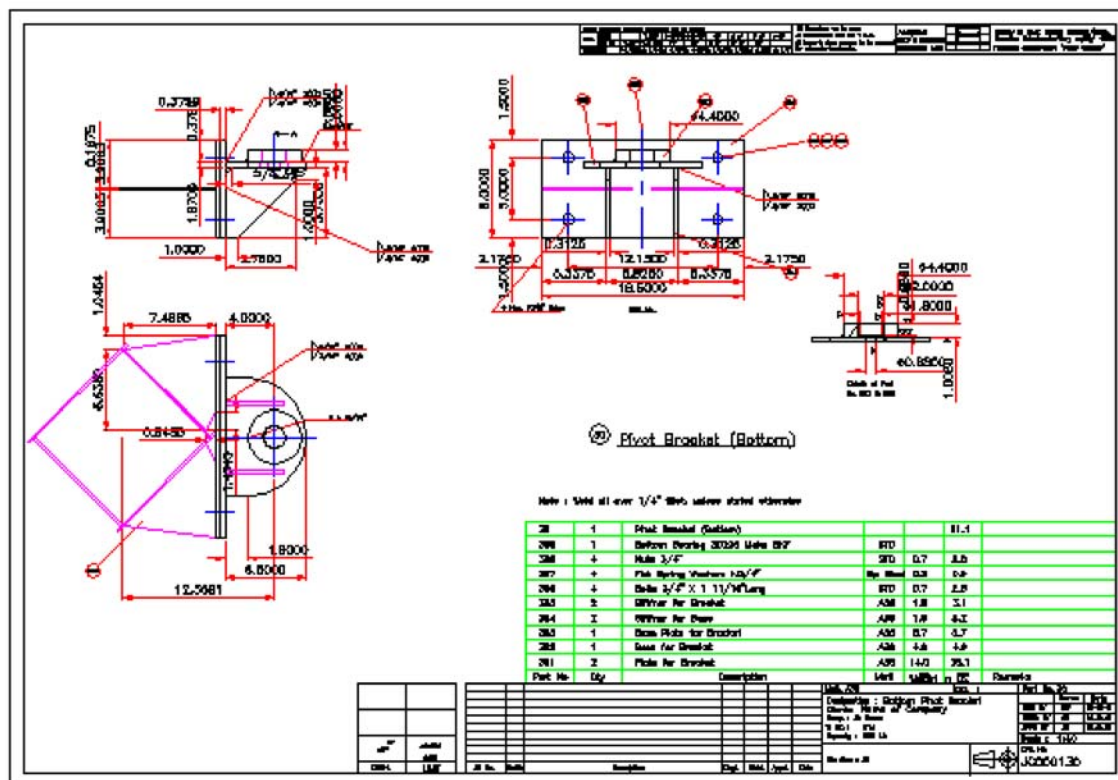


A Drawing of a Fabricated Pillar.

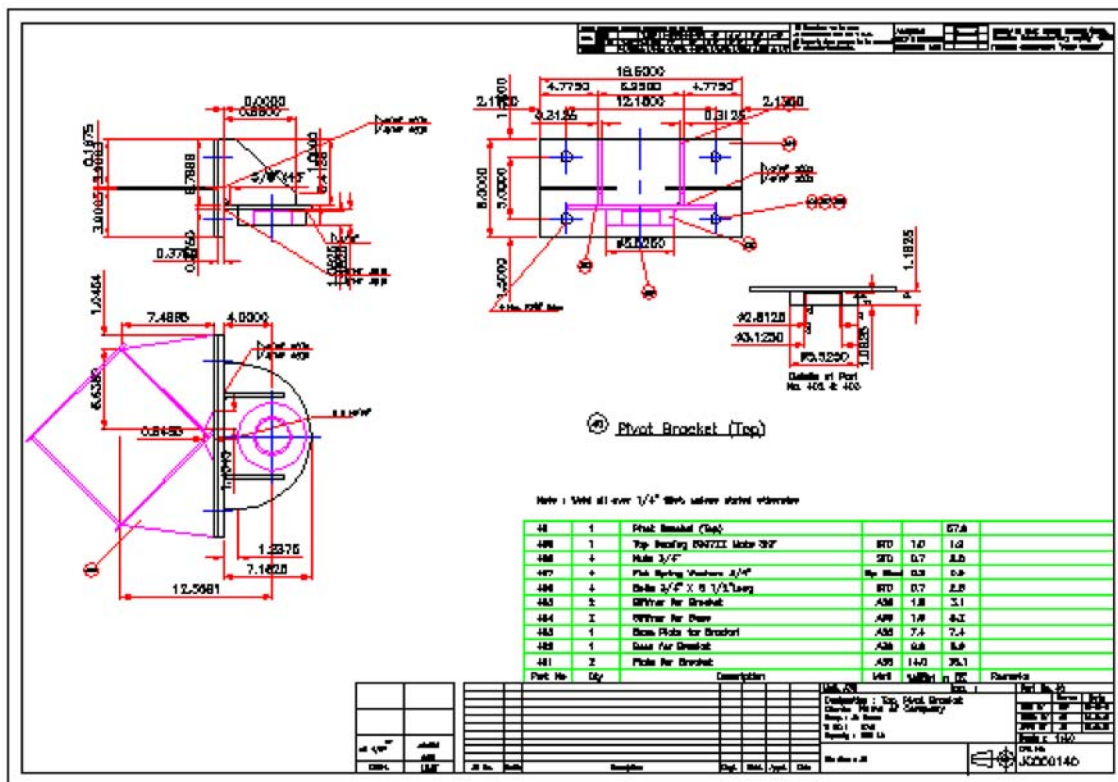




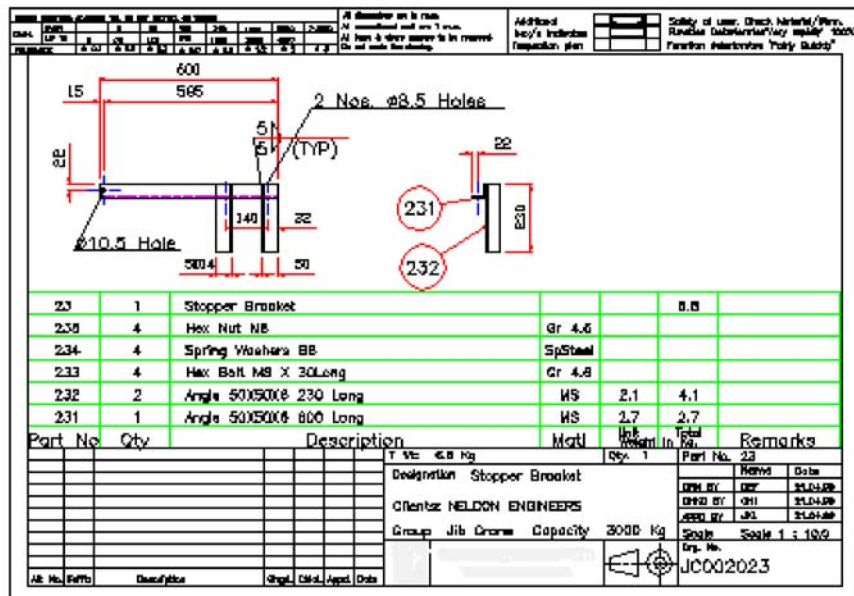
A Drawing of Pivot.



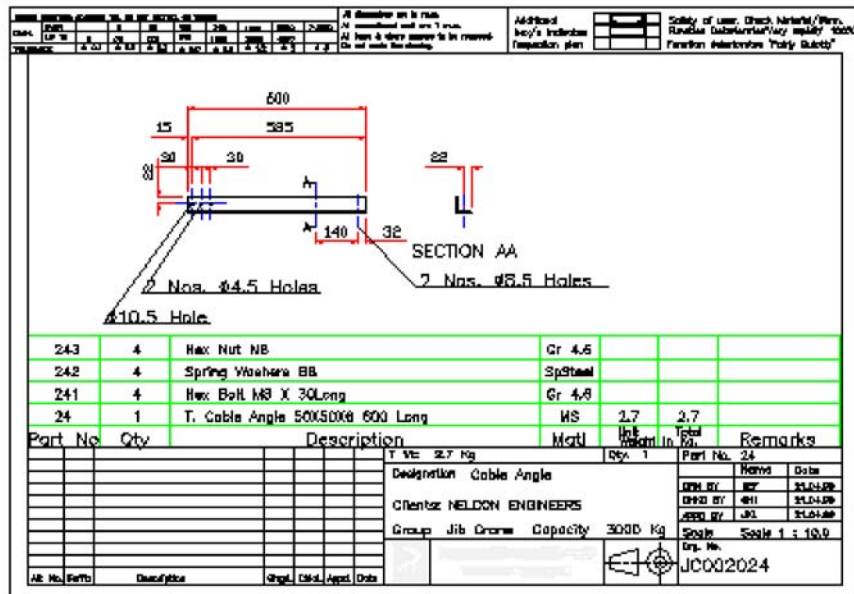
A Drawing of Bottom Bracket.



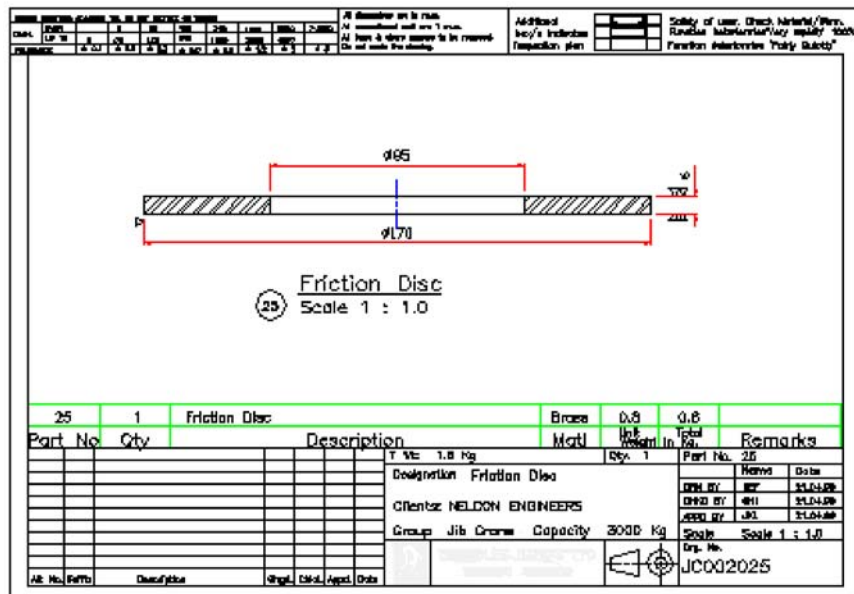
A Drawing of Top Bracket.



A Drawing of Stopper Bracket.

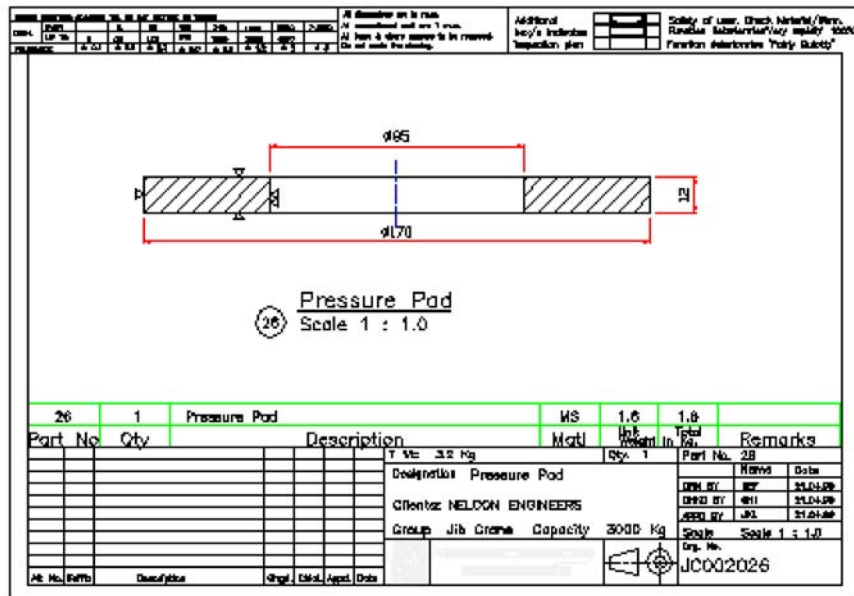


A Drawing of Cable Angle.

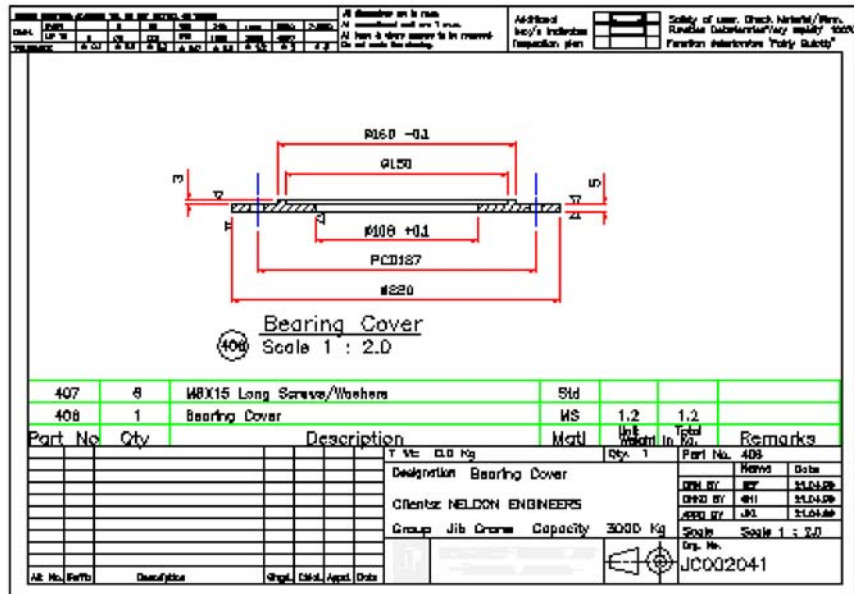


A Drawing of Friction Disc.





A Drawing of Pressure Pad.



A Drawing of Bearing Cover.

